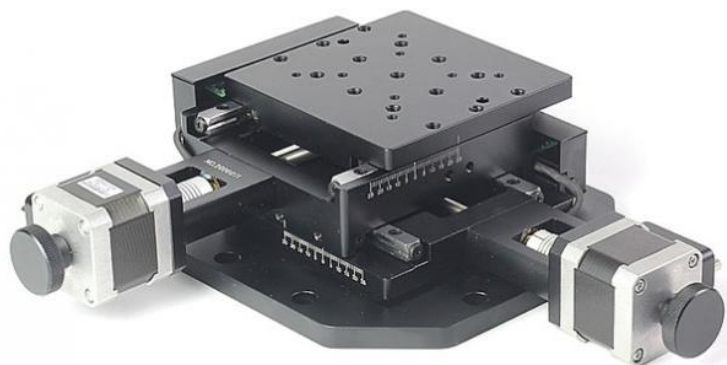


## 7SWA04 Series Motorized Biaxial Translation Stage



### Characteristics

- Equipped with a stepping motor and a standard DB9 plug, 7SC series motion controllers for automatic control;
- Compact integral design driving by the center of screw rod, saving space;
- Driving by precision grinding screw rod, high resolution;
- Cross roller guide with comfortable movement, high precision and big load;
- High quality elastic coupling for connecting motor and ball screw rod, synchronous transmission and little noise;
- Hand wheel to adjust by manual;

Model	7SWA0450
Travel	50mm×50mm
Lead of screw rod	0.75mm
Resolution	0.00046875mm
Standard motor	42 stepping motor(1.8°)
Repeatability	0.003mm
Linearity	0.02mm
Parallelism	0.02mm
Maximum speed(2 subdivision)	10mm/s
Load	30kg
Weight	2.8kg